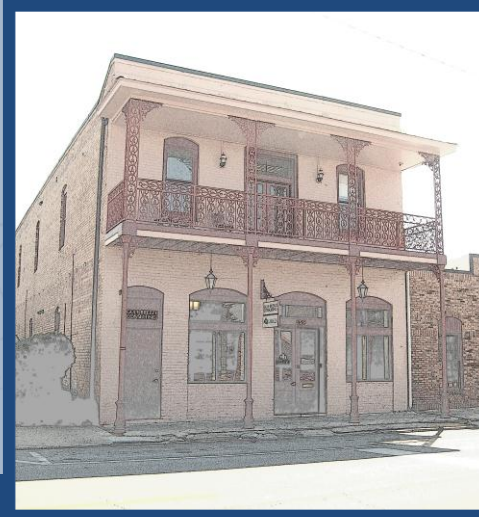


# GULF BREEZE CONSULTING INC

139 East Government  
Pensacola \* FL \* 32502 \* 850.453.6630



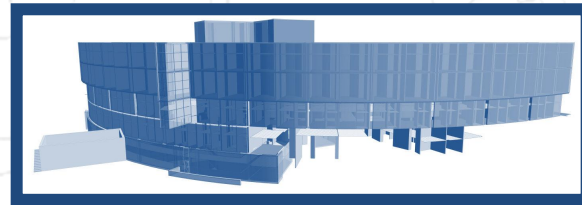
In this issue >>>

- About Our Building
- Quotable
- New Addition – Cole Osburn
- Corporate Philosophy
- Revit® Up for 3-D Design
- Bay Medical Facility
- About Us

## About Our Building

We are located in historic downtown Pensacola. Situated across the street from the famous Seville Quarter and right on top of the former Old Fort Pensacola, our building is surrounded by the base of the fort's walls. Ours is a true brick building, unlike most others, which have only a brick veneer. Just outside our back door in 1821, Andrew Jackson came to lower the Spanish flag and raise the stars and stripes, signifying Florida's incorporation into American territory.

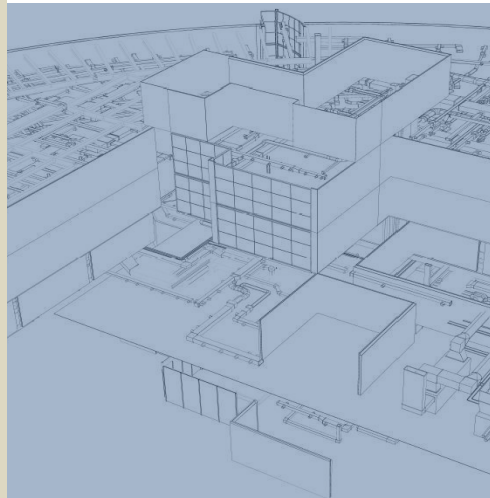
Since its construction in 1905, our location has been home to a bakery, a paint shop and an office supply company among other things. We are proud to be a part of the rich history in downtown Pensacola.



### Featured project:

### Bay Medical Facility

See page 4



## Quotable

“BIM (building information modeling) tools are as different from CADD tools, in the same way that a slide rule is different from a computer, or as a set of toy soldiers is different from a battle-oriented computer game.

Building models and BIM technology will certainly become the standard representation and practice for construction within most of our lifetimes.”

Chuck Eastman  
Director, Digital Fabrication Laboratory  
Georgia Institute of Technology

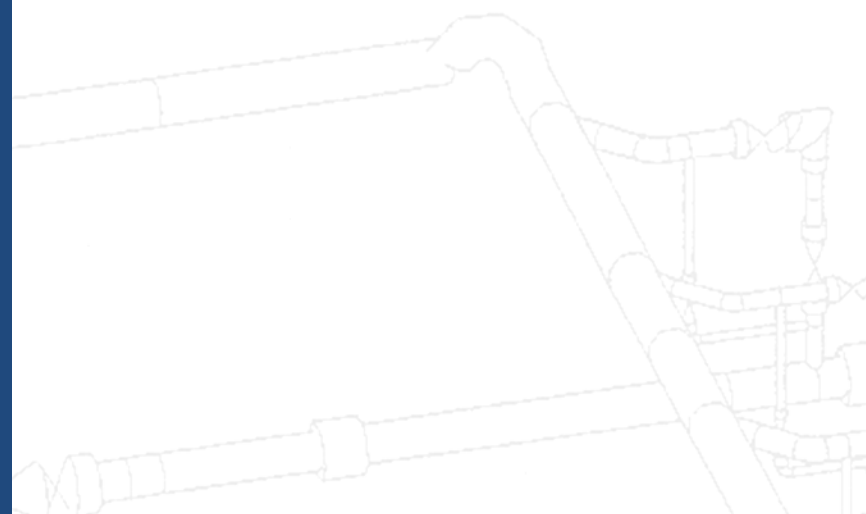
Please visit us at  
[www.gulfbreezeconsulting.com](http://www.gulfbreezeconsulting.com)



## Cole Osburn

Mechanical Engineer

GBCI is pleased to announce an addition to our company. Cole Osburn graduated from the University of South Alabama with a bachelor's degree in mechanical engineering. He is from Birmingham, Ala., and has been part of the Mobile chapter of The American Society of Heating, Refrigerating and Air-Conditioning Engineers (ASHRAE) as a member or officer for four years. During his time at South Alabama, Cole harnessed wave energy as a senior project and interned for Universal Oil Products, a company that develops and licenses technology to the petroleum refining industry. Here at GBCI, Cole has worked on a variety of projects including military buildings, schools, restaurants, office buildings and apartment complexes as well as radiation analysis and energy calculations. Cole's favorite part of working here is the diversity of projects and the thrill of the fast pace each day brings. He said, "Every day is different. It's never boring here. There's always something new and challenging to work on."



## Corporate Philosophy

We strive to provide exceptional customer service and engineering excellence with an honest and trustworthy team of engineers in an innovative atmosphere. We aspire to continue to grow to accommodate a broader range of consumer needs while maintaining a personal connection with each valued client.

Gulf Breeze Consulting, Inc. is ready and able to serve all your needs for professional consulting engineering services for commissioning and in the HVAC, electrical, plumbing and fire protection design disciplines.

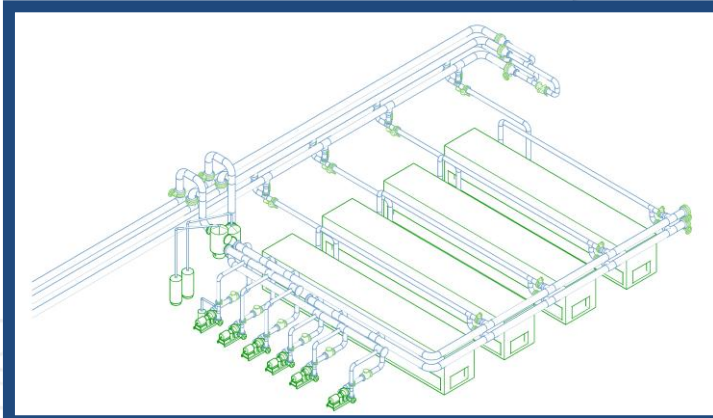


Photo Special to GBCI



Photo Special to GBCI

Above: GBCI and Dell Consulting, LLC participate in hands-on Autodesk Revit® training with a CADD Centers of Florida representative

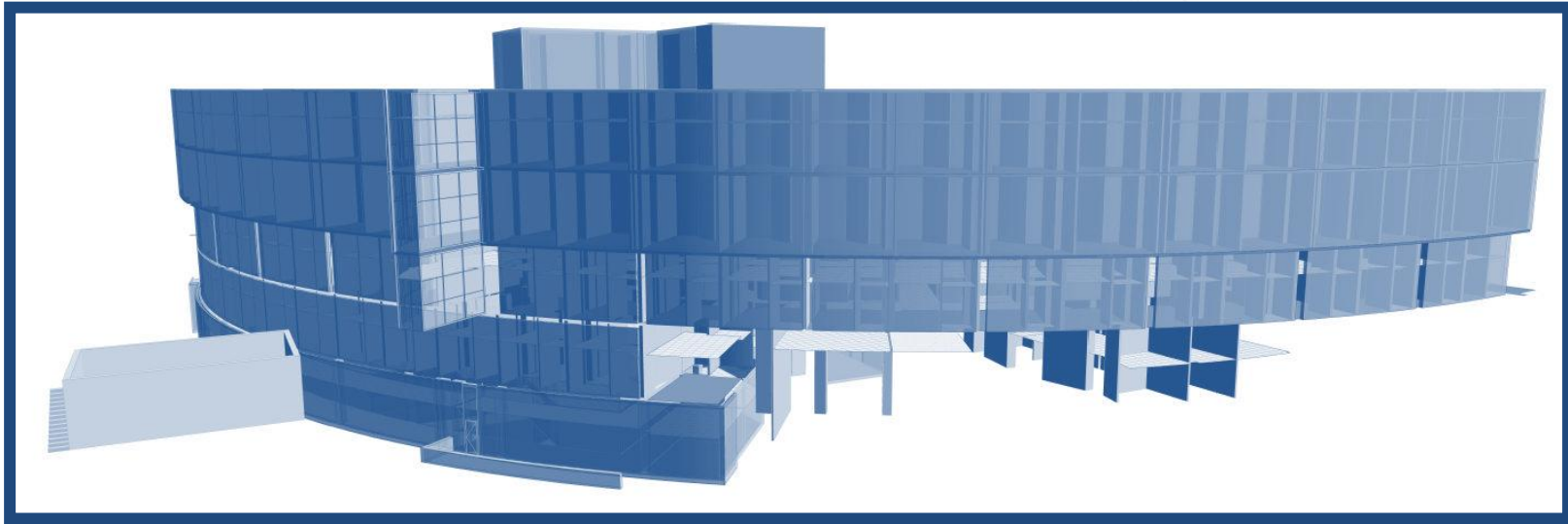
## Revit® Up for 3-D Design

GBCI partook in a week-long Autodesk Revit® training course. Revit® is a building information modeling program designed to improve collaboration among building system design team members and minimize building design coordination errors.

Each of our engineers completed the course and is more than capable of utilizing the software to its full capacity. We are already using our new skills to produce even more cost-effective, environmentally conscious and energy-efficient designs.

Please visit us at

[www.gulfbreezeconsulting.com](http://www.gulfbreezeconsulting.com)



## Bentley Capabilities – Bay Medical Facility

GBCI recently used Bentley building information modeling (BIM) software to model duct, HVAC piping and plumbing systems in 3-D for Bay Medical Center in Panama City, Fla. The \$70-million expansion debuted in September and included a five-story patient care tower and a new main entrance. Bay Medical was our first project completed using BIM. We are excited about both our Revit® and Bentley capabilities and look forward to applying our 3-D modeling skills as much as possible on current and upcoming projects.

Please visit us at  
[www.gulfbreezeconsulting.com](http://www.gulfbreezeconsulting.com)

## About Us

Gulf Breeze Consulting, Inc. is located in downtown Pensacola at 139 E. Government St. The principals of GBCI are Daniel Nye, P.E., and Kenneth Gonzalez, P.E., who, combined, possess more than 30 years of experience in the building design and construction industry. Together, Mr. Nye and Mr. Gonzalez have a diverse background of experience in nearly every aspect of the industry. GBCI is ready and able to serve all your needs for professional consulting engineering services for commissioning and in the HVAC, electrical, plumbing and fire protection design disciplines.

## Location

139 E. Government Street  
Pensacola, FL 32502

